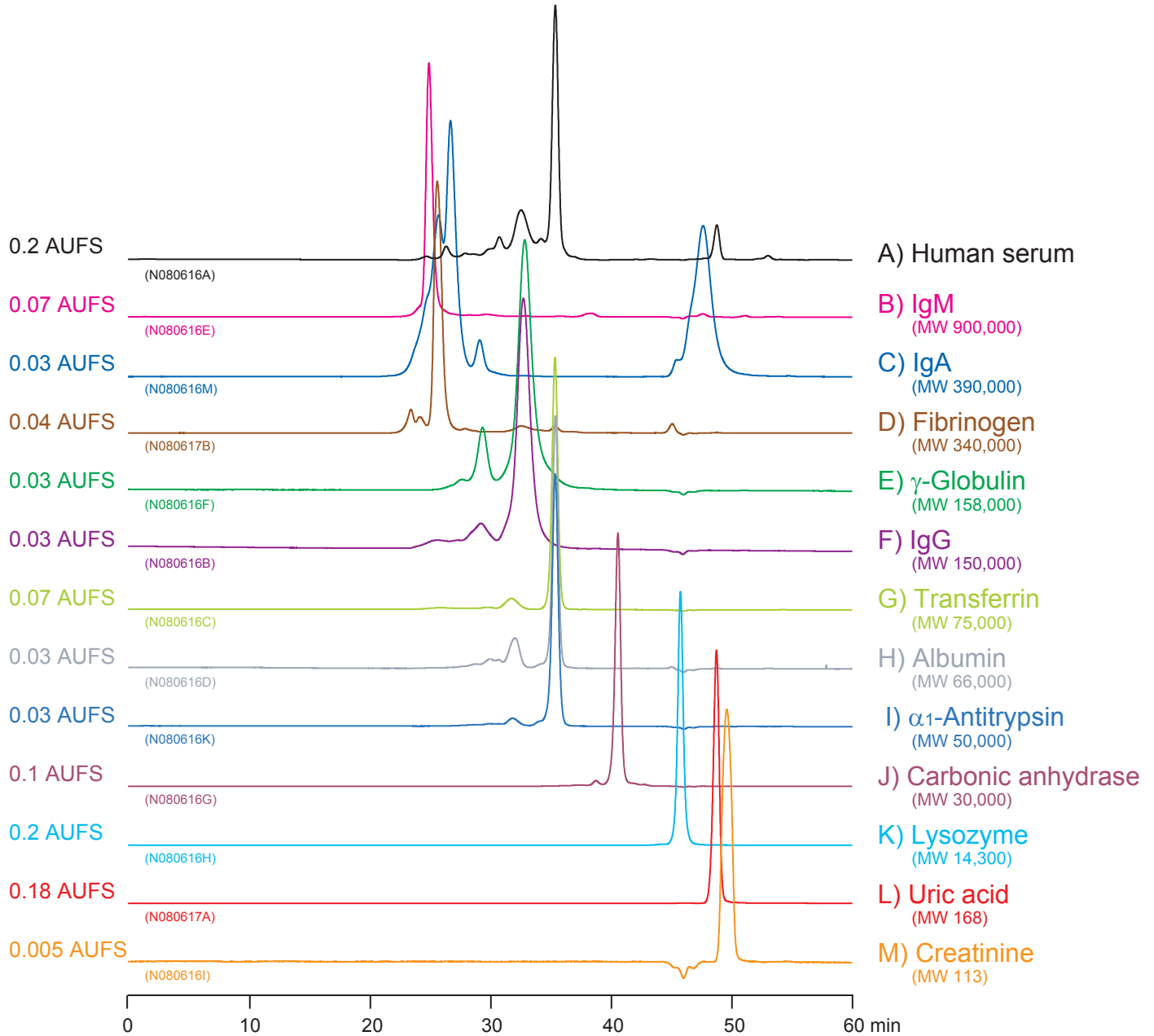


血漿成分  
Plasma constituents

N080702A



Column : YMC-Pack Diol-300 + Diol-200  
 300 X 8.0 mm I.D. X 2  
 Eluent : 0.1 M  $\text{KH}_2\text{PO}_4$ - $\text{K}_2\text{HPO}_4$  (pH 7.0) containing 0.2 M NaCl  
 Flow rate : 0.5 mL/min  
 Temperature : ambient (25°C)  
 Detection : UV at 280 nm  
 Injection : 20  $\mu\text{L}$  (L : 1  $\mu\text{L}$ )  
 Sample : A) 100  $\mu\text{L}/\text{mL}$   
 B-M) 1.0 mg/mL