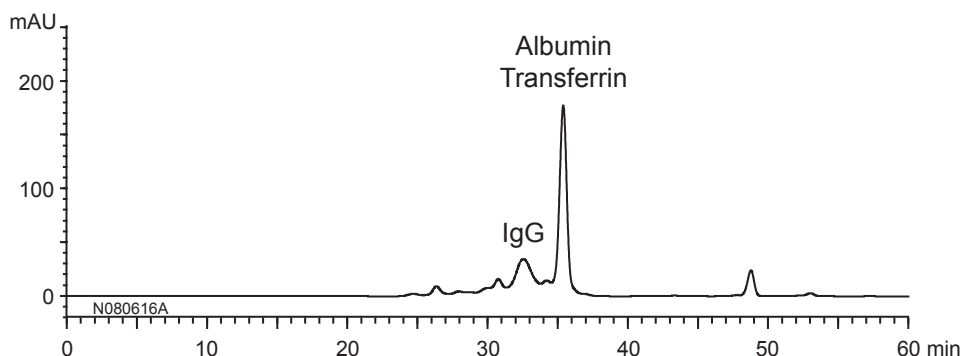


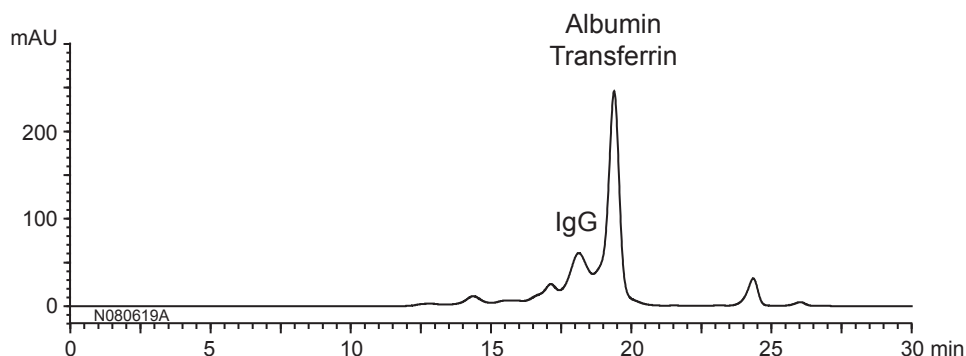
ヒト血清中のタンパク質  
Proteins in human serum

N080702B

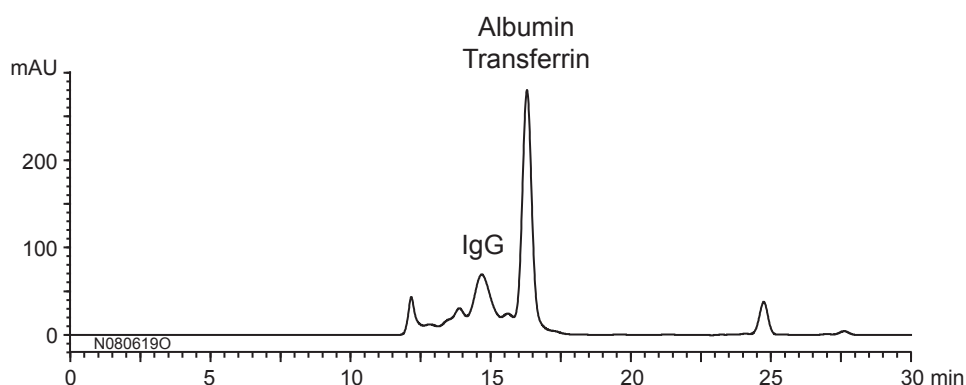
YMC-Pack Diol-300 + Diol-200  
300 X 8.0 mmI.D. X 2



YMC-Pack Diol-300  
300 X 8.0 mmI.D.



YMC-Pack Diol-200  
300 X 8.0 mmI.D.



Eluent : 0.1 M  $\text{KH}_2\text{PO}_4$ - $\text{K}_2\text{HPO}_4$  (pH 7.0) containing 0.2 M NaCl  
Flow rate : 0.5 mL/min  
Temperature : ambient (25°C)  
Detection : UV at 280 nm  
Injection : 20  $\mu\text{L}$   
Sample : Human serum (100  $\mu\text{L}/\text{mL}$ )